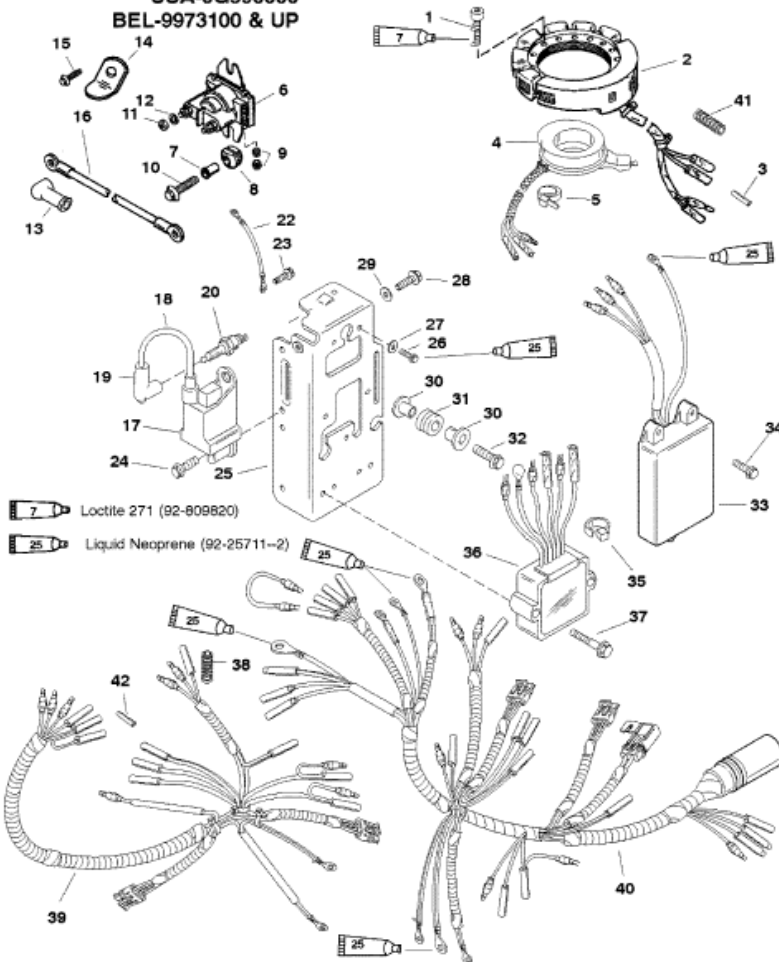


FOR SERIAL NUMBERS:  
 USA-0G590000  
 BEL-9973100 & UP



NOTE: APPLY LIQUID NEOPRENE TO ALL RING END WIRING TERMINALS.

Parts List

Ref	Class	Part	Description	Qty	Comment	Footnote
1		40073 30	SCREW (M5 X 30)	5	MANUAL	
2	398	832074A 5	STATOR	1	MANUAL	
3		13541	PLUG	2	MANUAL	
4		853960T	TRIGGER	1	MANUAL	
5		56762	CABLE TIE (4 IN.)	1		
6	89	850187A 1	SOLENOID ASSEMBLY	1	ELECTRIC	
7	23	818968	BUSHING	2	ELECTRIC	
8	25	818967	GROMMET	2	ELECTRIC	
9	11	26419	NUT (8-32)	2	ELECTRIC	
10	10	40011129	SCREW (M6 X 25)	2	ELECTRIC	
11	11	64015	NUT (1/4-20)	2	ELECTRIC	
12	13	26992	LOCKWASHER	2	ELECTRIC	
13	85	830233	INSULATOR (RED)	1	ELECTRIC	
14		827510 1	RETAINER	1	(ELECTRIC HANDLE)	
15	10	812832 1	SCREW	1		
16	84	88439A 4	BATTERY CABLE (NEGATIVE-ELE)	1		
17		827509A 7	CDM ASSEMBLY	2		3
18	84	821945A61	HI-TENSION CABLE	2		
19	85	63709A 1	BOOT	1		
20	33	816737 2	SPARK PLUG (NGK# BP8H-N-10)	2		
21	33	816837 2	SPARK PLUG (NGK#BPZ-8H-N-1C)	2		
22	84	88807A44	CABLE	1	MANUAL	
23	10	818934 12	SCREW (M8 X 12)	1	MANUAL	
24	10	821291 16	SCREW (M6 X 14)	4		
25		830236 1	PLATE-ELECTRICAL	1		3
26	10	822393 12	SCREW (M5 X 12)	1		
27	12	89302	WASHER	1		
28	10	821291 14	SCREW (M6 X 14)	1		
29	12	29245	WASHER	1		
30	23	831870 1	BUSHING	6		1
31	25	822002	GROMMET	3		1
32	10	40011130	SCREW (M6 X 30)	3		1
33		821889A49	REV LIMITER	1	(MANUAL)	
33		821889A50	REV LIMITER	1	(ELECTRIC)	
34	10	821291 25	SCREW (M6 X 25)	2		
35	54	816311	STA-STRAP (8 IN.)	4		
36		854515	VOLTAGE REGULATOR	1	ELECTRIC	
37	10	821291 35	SCREW (M6 X 35)	2	ELECTRIC	
38	32	828547353	CONDUIT	1	ELECTRIC	
39	84	854323A 2	HARNESS ASSEMBLY-ENGINE	1	(MANUAL)	3
40	84	854323A 2	HARNESS ASSEMBLY-ENGINE	1	(ELECTRIC)	2